



Cash Intelligence AI Super Agent

# Gia AlphaCash™

**Gia AlphaCash™: Unlock Millions of Trapped Cash Hidden in Your Receivables.**

**Discovers your next \$10M-\$X00M. Lock-in your cash target and maximize conversion.**

## Purpose-built to recover cash from your receivables.

Gia AlphaCash™ connects to your existing AR data and immediately identifies the Alpha Accounts — the precise set of customers whose delinquency represents the largest share of your past-due balance. Finance leaders get a complete AR health picture, a prioritized action plan for collectors, and boardroom-ready reports in under 60 seconds.

### Key Benefits

**30-50%**  
More Cash Recovered

**<60s**  
Data to Action Plan

**100%**  
Autonomous Cash Conversion Cycle

**0**  
ERP Projects Required

**2**  
Ways to connect

**Every operational insight is computed deterministically from your raw data — no AI guesswork, no estimation. Safe for board reports from day one.**

### The Problem We Solve

Collections effort spreading thin across your entire AR portfolio does not lead to optimal DSO, does not maximize cash conversion, and does not give accurate cash forecasts to leadership.

- **Diffused effort:** working every account equally misses the highest-impact accounts.
- **Outdated AR reports:** decisions made on yesterday's data.
- **No executive strategy:** CFOs lack real-time, boardroom-ready intelligence to act.

#### KEY CAPABILITIES

## Global Intelligence for the Office of the CFO

### Executive AR Dashboard

Total AR, past-due, delinquency %, Alpha Account count, on-account cash, and intercompany totals — computed deterministically on upload. Board-safe from day one.

### Collections Visibility

Real-time view of each collector's past-due exposure and account load, with full drill-down into individual portfolios and customer aging breakdowns. Precise accountability.

### Intercompany Segregation

Detects and excludes intercompany accounts by customer-name match. Leadership sees only true third-party AR exposure — no inflated delinquency numbers.

### Alpha Account Identification

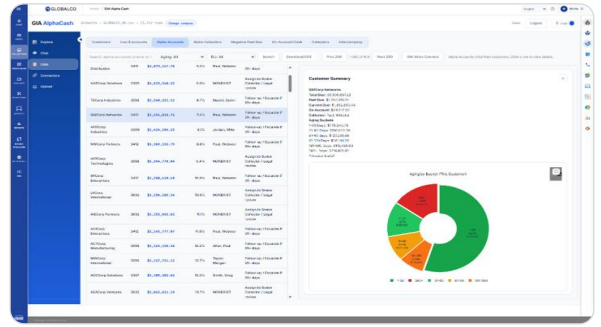
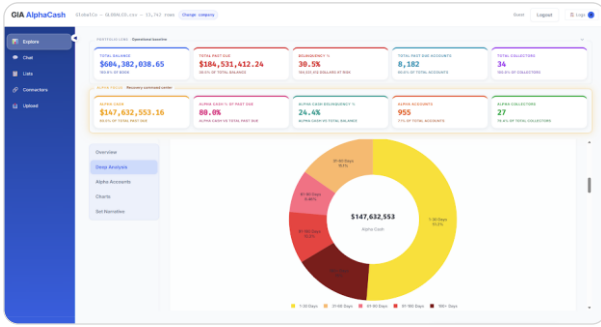
Identifies Alpha Accounts (Vital Few) — the smallest set of customers whose delinquency drives the largest share of total operational past-due. Downloadable work list for same-day action.

### On-Account Cash Detection

Surfaces unapplied cash, unmanaged balances, and negative past-due credits — revealing hidden reductions in stated past-due and cash application opportunities.

### AI Chat & Deep Analysis PDF

Ask any AR question in plain language. Export a boardroom-ready PDF with executive narrative, account tables, aging concentration, and prioritized action recommendations.



## How Gia AlphaCash™ Works.

Every number is computed from your raw data — no estimation, no AI guesswork. Safe for board reports.

### Deep Receivables Intelligence

- AR ledgers & payment histories
- CRM notes & communications
- Dispute records & cash signals

### Accelerated Cash Recovery

- Faster cash conversion
- Improved dispute resolution
- Better customer engagement

### Cash Discovery

- High-probability payment accounts
- Hidden recovery opportunities
- Emerging payment signals

### Continuous AI Learning

- Successful collection patterns
- Payment timing behavior
- Customer response signals

### Intelligent Prioritization

- Highest-value accounts first
- Highest payment probability
- Fastest cash opportunities

## Built for every finance leader who owns cash performance.

### Global CFOs

Improve cash visibility and working capital performance across the enterprise.

### Private Equity Firms

Accelerate cash recovery and maximize liquidity across portfolio companies.

### Global Business Services

Optimize collections operations and AR intelligence across regions and entities.

### Shared Services Centers

Focus collector teams on the highest recovery opportunities with precision targeting.

## Everything you need to accelerate your Cash Conversion Cycle – starting today.

### Rapid Deployment & Global ERP Ready

- Data to Action in <60s.
- Direct Connectivity.
- Portfolio Precision.
- Immediate Impact.

### Built on Emagia Autonomous Finance

- Integrated Order-to-Cash operations.
- Agent Studio: build and customize AI agents.
- Native agentic AI for autonomous workflows.
- Secure cloud for global data sovereignty.

### Gia Collect™ Autonomous Recovery

- Outbound AI Calls.
- Multilingual.
- Promise-to-Pay.
- Zero Manual Effort



## Emagia Solution Deployment and Delivery Model

Emagia Solutions have pre built interface adapters with leading financial systems such as Oracle, SAP, PeopleSoft, JD Edwards, MS Dynamics and others. Emagia Solutions deployment model – Deployment can be done in EmagiaCloud as Software-as-a-Service in a low-cost monthly subscription model.

## About Emagia

Emagia is a leading provider of Enterprise Order-to-Cash Management (OTC) solutions. For over a decade, Emagia has been delivering highly innovative technology solutions to transform, automate and optimize receivables, credit and collections processes for maximizing cash flow. For more information, contact us at [emagiainfo@emagia.com](mailto:emagiainfo@emagia.com).